



# Great Northern Detention Pond Safety Improvements

Watershed Protection and  
Development Review  
Department  
Watershed Engineering Division



February 4, 2008



**Watershed Protection  
Development Review**

# Pond with Improvements

Colored Lines –  
Short Concrete  
Walls

Grey Areas –  
New Spillway,  
Road &  
Sidewalk



# Concrete Colors

**Color Choices of Wall and Spillway:**



A



B



C



D



E

# Spillway Texture

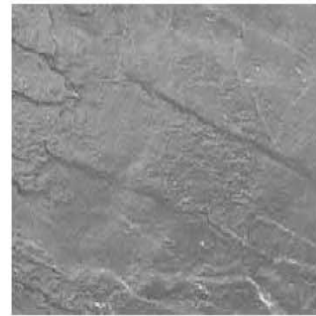
## Texture Choices for Spillway:



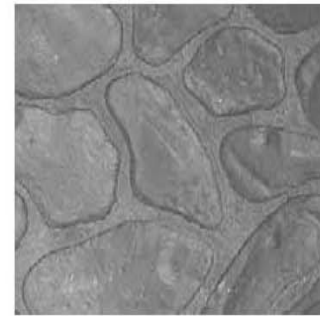
A



B



C



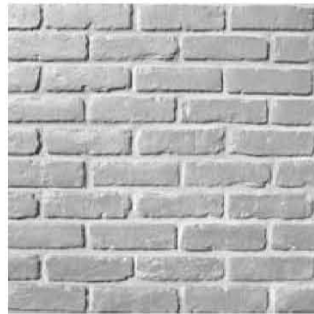
D

# Wall Texture

## Texture Choices for Wall:



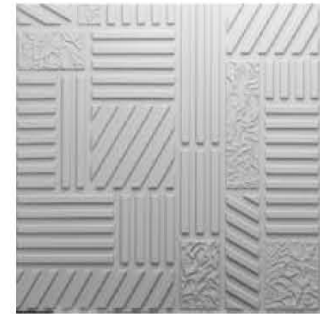
A



B



C



D

# Planned Wall and Spillway



# Planned Spillway



# Planned Bench Area



# Question and Answer

City of Austin Website:

[www.ci.austin.tx.us](http://www.ci.austin.tx.us)

Search for: *Great Northern Pond*

Contact Number:

947-3371